

500 bph compact line



Key Benefits

- Compact, low-cost poultry processing solution to process up to 500 birds per hour
- Complete set-up which includes all equipment necessary for primary processing
- All equipment is simple and quick to install, operate and maintain
- Designed for future expansion and growth
- Proven technology based on 30 years of poultry processing experience
- Smart engineering and small overhead provide considerable cost savings
- Low initial investment, low cost of ownership per bird and quick return on investment
- Designed and manufactured in Holland

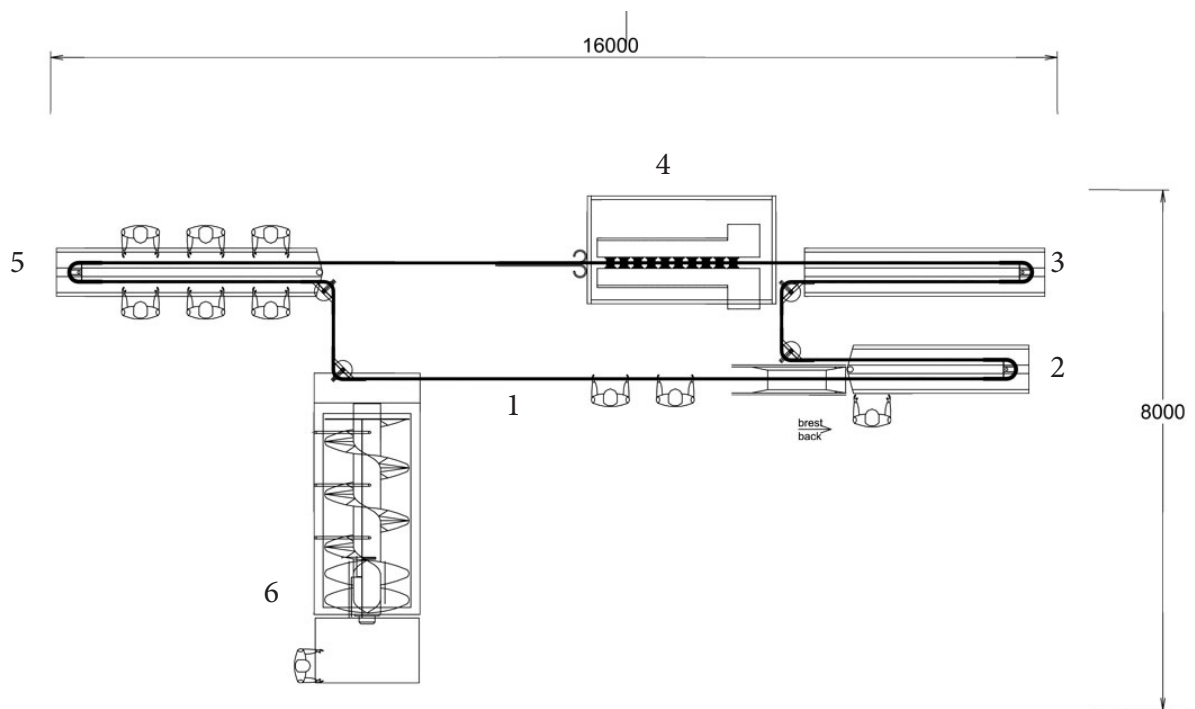


DUTCH POULTRY TECHNOLOGY B.V.
Rijnlaan 113, 2105 XL, Heemstede, The Netherlands

Website: www.dutch-poultry-tech.com

This information corresponds to the most recent available information at the time of publication.
The construction and execution of the product are subject to future modification, without notice.
No rights can be derived from this publication.

Layout



Legend

1. Overhead Conveyor
2. Bleeding Trough
3. Scalding
4. Plucking section with integrated head / windpipe puller
5. Evisceration trough with work stations and evisceration tools
6. Water Chiller with drain table



DUTCH POULTRY TECHNOLOGY B.V.
Rijnlaan 113, 2105 XL, Heemstede, The Netherlands

Website: www.dutch-poultry-tech.com

This information corresponds to the most recent available information at the time of publication.
The construction and execution of the product are subject to future modification, without notice.
No rights can be derived from this publication.

Process / Equipment list

| Description | | | | | | | |
|-----------------------------|--------------|-----------------------|---|--|---------------|----------------|-----------|
| | Staff | Process | Description | kW | Water | Air | |
| Prefab modules | Arrival | 1 | Hanging | Manual hanging on overhead conveyor | | | |
| | | 1 | Crate cleaning | Optional: High pressure washer for cleaning crates | | | |
| | | 1 | Crate handling | Optional: Roller track for transporting live bird crates | | | |
| | Killing | | Stunning | Optional: Operation according to waterbath principle | | 0.3 - 0.5 m3/h | |
| | | 1 | Killing | Manual killing with a knife | | | |
| | Bleeding | | Bleeding | SS trough, effective bleeding length 2500 mm with integrated line drive / tensioner | 1*2.2 kW | | |
| | | | Scalding | Double pass, 550 mm wide, effective scald length 2500/3800mm (soft/hard scald) *Scalder heating by heat exchangers requires additional energy which depends on many circumstances: is the scalder open or closed, room temperature, bird sizes and veterinarian / governmental requirements. A rough estimate for required energy is 70kW/hour/section at 50°C and 82kW/hour/section at 60°C. | 1*3.0 kW* | 0.5 L/bird | |
| | Plucking | | Plucking | 2 opposing plucking cabinets with a total of 32 plucking discs | 4*3.0 kW | 0.6-3.0 m3/h | |
| | | | Head Pulling | Device for removing heads, in-line, straight type | | | |
| | Evisceration | | Evisceration trough | SS trough, 5000 mm work length with faucets, integrated vacuum/air connections | | | |
| | | | Hand tool accessories | Sharpening steel, stainless steel safety gloves | | | |
| | | 1 | Vent Cutting | Vacuum and air operated vent gun, capacity 2000 bph per tool. knife Ø 30 mm | | | 23,7 m3/h |
| | | 1 | Opening | Opening the vent with manual opener knives | | | |
| | | 1 | Evisceration | Removing the intestine package with evisceration forks | | | |
| | | 1 | Heart/Liver | Removing / separating hearts and livers from intestine package | | | |
| | | 1 | Gizzard/Intestine Handling | Removing / handling the remaining intestine package | | | |
| | Unloading | | | Optional: Gizzard Inspection Table with peeling roll | 2*0.55 kW | 0.6 m3/h | |
| | | 1 | Neck Cutting | Pneumatic neck scissor, capacity 1000 bph per tool | | | 23,7 m3/h |
| 1 | | Lung Removal | Vacuum-operated tool, capacity 1000 bph per tool, pipe Ø 25 mm | | | | |
| | | Bird Washing | Automatic outside bird washer | | 0.25-0.5 m3/h | | |
| | | Hock Cutting | Automatic in-line hock cutter, driven by the overhead conveyor | 1*1.1kW | | | |
| Chilling | | Unloading | Automatic unloading station for unloading whole birds or hocks | | | | |
| | | Shackle washing | Chain and shackle washer with rotating brushes and spray nozzles | 2*0.4 kW | 0.3 m3/h | | |
| | | Chilling | Water chiller, 3000 mm long, Ø 1600 mm Optional: water separator to remove excess water from carcasses Optional: perforated drain table | 1*1.75 kW 1*1.5 kW | 3000 liters | | |
| Packing | 1 | Packing | Optional device to bag whole birds, capacity 500-800 bph per bagger | | | 10 L/bird | |
| Additional equipment | | | | | | | |
| | | Overhead Conveyor | Stainless steel T-Track, 6 inch pitch, 63 meters long | | | | |
| | | Line Drive /Tensioner | Combined line drive / tension unit | 1*2.2 kW | | | |
| | | Shackles | 264 stainless steel defeathering and evisceration shackles | | | | |
| | | Chain | Hardened, calibrated, galvanized steel chain, 25,4x8mm | | | | |
| | | Compressor | Optional: air compressor with a capacity of 600 liters per minute | | | | |
| | | Vacuum | Optional: vacuum transport system, vacuum pump, 1 buffer and 1 collection tank | 1*2.5 kW | | | |