



pluck & play solutions.

Quotation no.

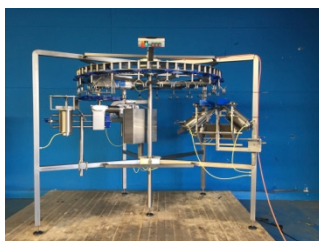
Heemstede, 2018

Yr Reference : **CCM Quote 7pc**
E-mail : info@dutch-poultry-tech.com
Subject : **COMPACT Circular Cut-up system 7-PC**

Dear Sir,

Thank you for your inquiry. We are pleased to herewith submit our quotation for a **COMPACT Circular Cut-up system** consisting of the following components:

Design parameters	
Capacity	500-2500bph (1 hanger), up to 3500 birds per hour (2 hangers)
Type of bird	broilers
Average RTC weight	1800 gram
Weight range	900 – 3500 gram. Weight range 10% +/- in 1 flock
Pitch	6 inch
Final product	fresh/frozen packed on tray
Electricity	220-380V 50/60Hz Alternative on request



Price Summary - see page 5

Terms of delivery and payment - see page 7

If you have any questions with regards to this quotation, please do not hesitate to contact us at your earliest convenience.

Yours sincerely,

| **Dutch Poultry Technology**



060 Cut-up and deboning

Frame Module

Self Standing Frame, on centre pole, entirely made of stainless steel, consisting of:

- rotating circular shackle carrier
- drive unit, variable speed, water resistant, 0.75 kW
- 20pcs 360° turntable cut-up shackles
- control panel with VLT
- integrated cabling
- on-off/safety switches
- levelling feet
- enforced stainless steel posts
- pre-wired and Pluck & Play

Price:

Whole Wing Cutter High Yield Module

The whole wing cutter cuts the whole wings of the bird, and includes:

- 2 stainless steel motors, each 0.75 kW
- stainless steel wash-down motors by ABI
- 150mm single bevel cutting blades
- enforced wing stretching guides for wing-tip positioning
- height adjustable, 15mm stainless steel frame
- multiple fine-tuning possibilities (up/down, width, angle)
- mounted on stainless steel, reinforced post

Price:



and

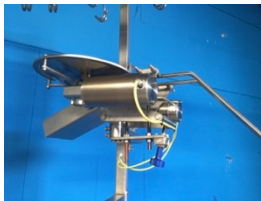


Breast Cap Cutter Module

Breast cap cutter separates the breast cap from the cavity and includes:

- 2 stainless steel motors, each 0.25 kW
- stainless steel washdown motors by ABI
- low RPM
- 350mm single bevel cutting blades
- solid centred positioning needle
- height adjustable, 15mm enforced stainless steel frame
- multiple fine-tuning possibilities (up-down, width, angle)

Price:



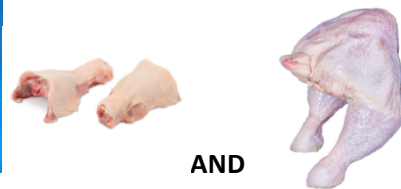
and

Back piece Cutter Module

Back piece cutter cuts the back piece from the birds and includes:

- 2 stainless steel motors, each 0.75 kW
- Stainless steel wash-down motors by ABI
- 350mm single bevel cutting blades
- centring guides
- height adjustable, 15mm stainless steel frame
- multiple fine-tuning possibilities (up-down, width, angle)
- mounted on stainless steel, reinforced post

Price:



AND



pluck & play solutions.

Saddle splitter / leg quarter Module

Saddle splitter cuts the saddle, through the spine, into two leg quarters (legs, back attached), and includes:

- stainless steel motor, 0.75 kW
- stainless steel wash down motors by ABI
- 350mm double bevel cutting blade
- height adjustable, 15mm stainless steel frame
- multiple fine-tuning possibilities (up-down, width, angle)
- mounted on stainless steel, reinforced post

Price:

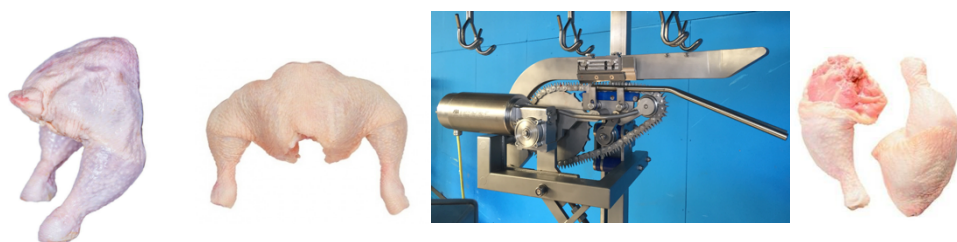


Leg Processor Module

Leg processor anatomically separates the saddle into two whole legs without back piece attached, and includes:

- stainless steel motor for sprocket/chain drive, 0.25 kW
- stainless steel wash down motor by ABI
- guidance-chain synchronized by VLT
- double inner-sinew cutting blades
- strong 15mm thick curved centring guide
- multiple fine-tuning possibilities (up-down, width, size, angle)
- mounted on stainless steel, reinforced post

Price:





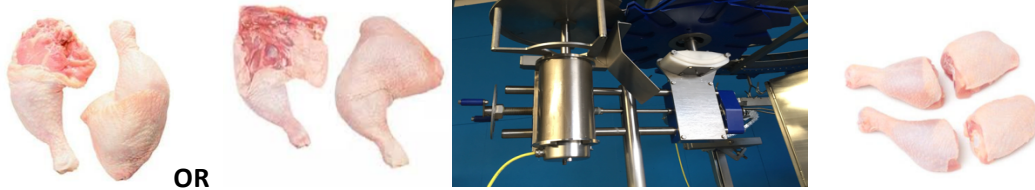
pluck & play solutions.

Drum / Thigh Cutter Module

Drumstick and thigh cutter module cuts whole legs into thighs and drumsticks and includes:

- stainless steel motor, 0.275 kW
- wash-down motors by ABI
- 350mm double bevel cutting blade
- anatomic leg bending wheel for accurate cut at the joint
- height adjustable, 15mm solid stainless steel frame
- multiple fine-tuning possibilities (up-down, width, angle)
- mounted on stainless steel, reinforced post

Price:



Leg Unloader Module

Leg unloader module unloads the whole legs or drumsticks and includes:

- height adjustable, stainless steel frame

Price:



Services

Supervision of installation and commissioning as per the terms and conditions stated below:

Packing costs ex-works, Incoterms 2014 including

Price subtotal FOB Truck, Hillegom



pluck & play solutions.

Terms of delivery and payment

- Delivery terms: According to the attached “Metaalunie Conditions 2014”, unless specifically agreed otherwise
- Delivery: Ex-works, Incoterms 2010, excluding packing and handling, excluding all other costs
- Delivery time: 10-14 weeks ex-works after receipt of order, down payment
- Method of payment: By means of bank transfer to ING Bank Amsterdam, Bijlmerdreef 109, 1102BW Amsterdam
IBAN: NL18 INGB 0004 5082 56
SWIFT/BIC: INGBNL2A
- Payment terms: 60% down payment
40% to be paid after inspection but before loading of the equipment
- Validation: Prices are valid for 60 days after date of this quotation.
- Guarantee: The duration of the guarantee is 6 months from the date of installation but in any event no later than 12 month after shipment ex-works, whatever date comes first. The guarantee does not cover the use of wear and tear parts and shall end immediately in case of:
- Inadequate maintenance
 - incorrect use of the equipment
 - processing parameters which fall outside the design parameters specified in the order confirmation
 - repair, installation, commissioning by a third party or use of non-OEM parts without explicit approval of Dutch Poultry Technology
- Exclusions:
- All civil works, building and secondary overhead steel construction
 - Compressed air installation and vacuum installation
 - All refrigeration equipment for pre-chilling, area cooling, blast freezing and chilled and cold storage of poultry meat
 - All electrical works and control panels other than those included in the scope of supply
 - Water and electricity supply
 - All piping and cabling required for supply of water, electricity, steam, vacuum, compressed air and water to the quoted equipment
 - All labour required during installation and commissioning of the equipment like electricians, plumbers, pipe fitters and unskilled



pluck & play solutions.

Supervision of installation and commissioning

The machine is in Plug&Play state, to be installed by the buyer. However, we can provide supervision of installation and commissioning at a daily rate of € 650,- (per day), excluding 1 return air ticket excluding boarding/lodging (hotel according to European standards), excluding local taxes and local transport costs.

The customer has to provide the following labor during the installation and commissioning period:

- 1 foreman who speaks fluent English
- 1 electrician
- 2 unskilled workers